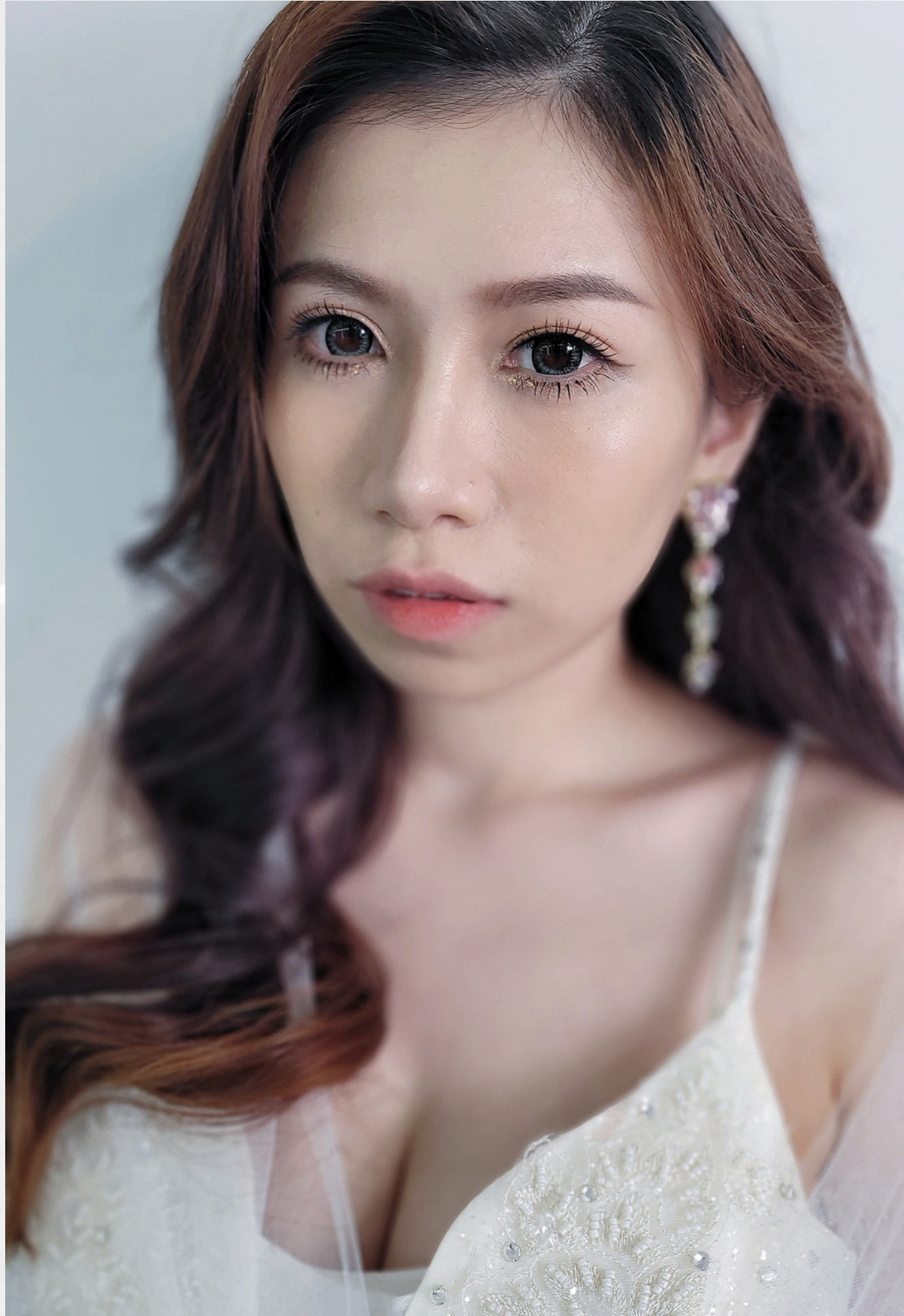


# PERSONAL STYLING LADIES







# LADIES



## 1 Fresh Look & 1 Hairstyling

The fees are for service done by 1 Makeup artist

Your Location	Our Location	Your Location (Weekdays Mon - Thurs)
\$250 1Pax	\$180 1Pax	\$388 (3hrs)
\$440 2Pax	\$320 2Pax	\$688 (6hrs)
\$555 3Pax	\$450 3Pax	
\$728 4Pax	\$560 4Pax	

Additional Extension of Time & Follow Through \$80 Per hr

Skincare Prep-Ampoule

Eyebrow shaping & grooming

Premium faux lashes-upper

Eyelids adjustment additional \$15

Hair accessories (Loan \$30 Per items refundable deposit)

Hair extensions \$50 (Refundable deposit) +\$30 (Non-refundable)

Prep hair extensions in advance. Pin, secure & style on the actual day

Makeup start 7.30am or before 7.30am + \$30

Makeup start 6.30am or before 6.30am + \$50

Makeup start 5.30am or before 5.30am + \$80

Makeup start 4.30am or before 4.30am + \$100

Makeup start 3.30am or before 3.30am + \$120

Location Surcharge / Eve PH & PH

Sentosa, Tuas, Off-islands + \$50 per trip per MUA

Personal Styling - cant be used for ROM/causal PWS

For moms' makeup & hair pls look under Actual Wedding Day





A W A R D S



E V E N T S

LIVE INTERVIEW



C O R P O R A T E

P H O T O  
S H O O T S







# G U Y S

## 1 Fresh Look & 1 Hairstyling

The fees are for service done by 1 Makeup artist

Your Location	Our Location	Your Location (Weekdays Mon - Thurs)
\$188 1Pax	\$100 1Pax	\$388 (3hrs)
\$250 2Pax	\$160 2Pax	\$688 (6hrs)
\$360 3Pax	\$180 3Pax	
\$400 4Pax	\$200 4Pax	Additional Extension of Time & Follow Through
		\$80 Per hr

Skincare Prep-Ampoule

Eyebrow shaping & grooming

Conceal dark under eye

Even out skin tone

Treat dry lips

Set the make up

Prep hair Create volume

Style to the liking

Style best suited for the individual

Cover bald spots

Set the hair

Makeup start 7.30am or before 7.30am + \$30

Makeup start 6.30am or before 6.30am + \$50

Makeup start 5.30am or before 5.30am + \$80

Makeup start 4.30am or before 4.30am + \$100

Makeup start 3.30am or before 3.30am + \$120

Location Surcharge / Eve PH & PH

Sentosa, Tuas, Off-islands + \$50 per trip per MU



# TERMS & CONDITIONS

\*All the services in our packages are to be used for the same day and are not allowed to be divided to use for separate events. The packages rates are subjected to changes.

\*Once jobs are done and completed by our muas, the clients are shown the finished jobs and have no other request, Muas are allowed to leave the locations. It is no longer our responsibility, as we are not able to predict what the clients' situations would be (example: running under the rain, perspiring too much, rubbing their eyes, constantly touching their hair etc) No compensation will be given!

\*Do take note, for the Personal styling this service is for makeup & hairstyling, Muas are not require to help clients to dress up for them. The makeup & hair must be done within 1hr 30mins, any delay by clients there will be an additional charges.